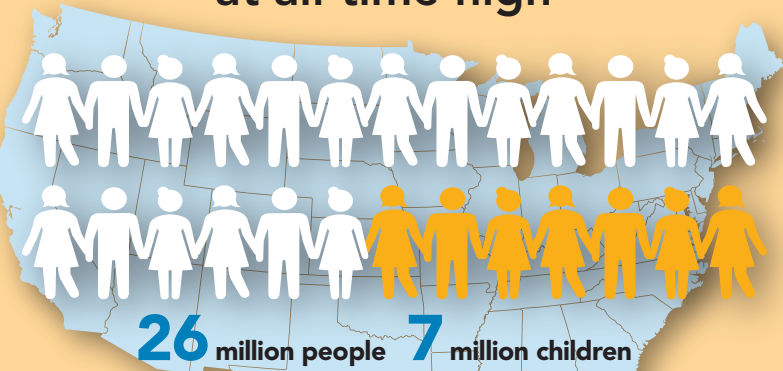


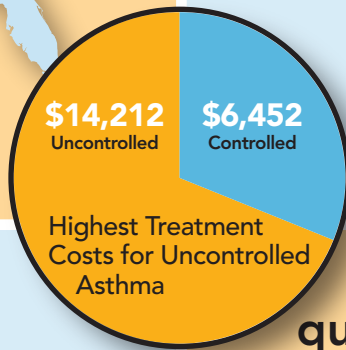
# Scope and Impact of The Asthma Epidemic

American College of Allergy, Asthma and Immunology

## Asthma prevalence at all-time high



**3,400** people die each year



## Patients receive substandard care



More than **15.3 million** physician and hospital outpatient department visits



**1.75 million** emergency department visits



**14.2 million** lost work days



**10.5 million** lost school days



**One-half million** hospitalizations

## Asthma care is needlessly costly

**\$3,259** Direct cost per person per year

**\$56 billion** Total annual cost



**5x** more costly for severe, uncontrolled asthma than mild asthma.

## Allergists improve quality, reduce costs



Fewer emergency care visits



Fewer hospitalizations and reduced lengths of stays



Fewer sick care visits



Better attendance at work or school



Greater satisfaction and increased productivity

Excerpted from *Asthma Management and the Allergist: Better Outcomes at Lower Cost.*

©2015 The American College of Allergy, Asthma and Immunology. The complete report with supporting documentation is available at [college.acaai.org/betteroutcomeslowercost](http://college.acaai.org/betteroutcomeslowercost)



American College of Allergy, Asthma & Immunology

