

Reading and interpretation of drug allergy patch testing

The following guidelines for reading patch testing at 48, 72, & 96 hours, and day 7 pertains to all chemical, metal, and drug allergy testing. The initial reading at 48 hours should be at least 30 minutes after removal of the test materials to allow for the irritation from the adhesive material to subside.

PATCH TEST MORPHOLOGY CODES

*0=Negative reaction (-)

1 = Weak (non-vesicular) Reaction, erythema, infiltration possibly papules (+)

2 = Strong (edematous or vesicular) Reaction (++)

3 = Extreme (spreading, bullous, ulcerative) Reaction (+++)

4 = Macular erythema only

5 = Irritant morphology

6 = Not tested

PATCH TEST INTERPRETATION CODES

0= Negative

1= Allergic

2 = Unknown

3 = Irritant

4= Not tested

RELEVANCE




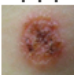

1= *Definite* if a use test with the putative item containing the suspected allergen is positive or positive patch to object/product

2=*Probable* if the substance identified by patch testing can be verified as present in the known skin contactants of the patient.

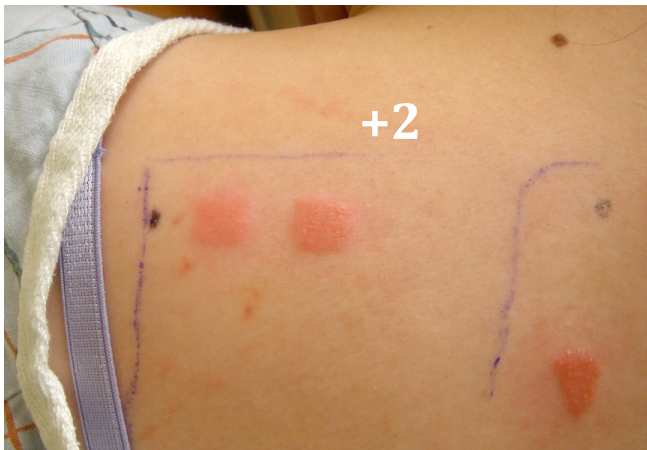
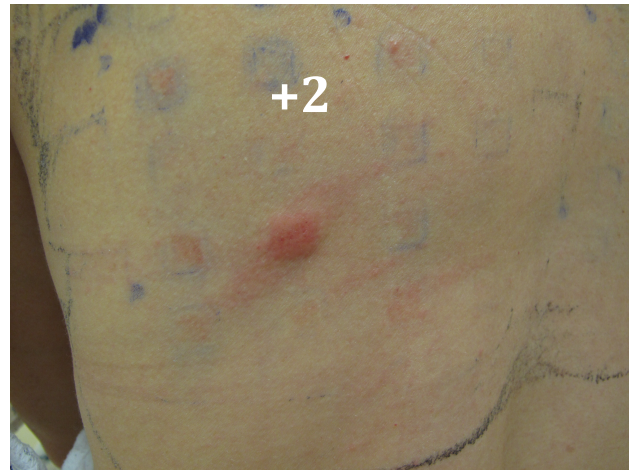
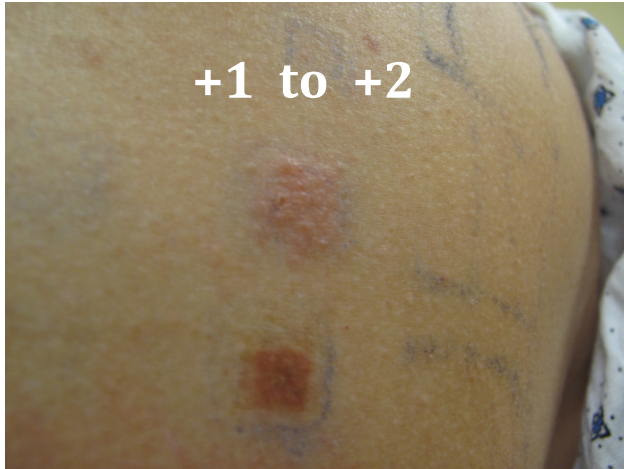
3=*Possible* if the patient is exposed to circumstances in which skin contact with materials known to contain the putative allergen will likely occur

4=Past

5=Unknown

-	negative
?+ 	doubtful
+ 	faint macular, erythema only weak(non- vesicular)positive
++ 	Strong(vesicular) positive erythema, infiltration, possibly papules
+++ 	extreme positive bullous reaction erythema, infiltration, papules, vesicles
R+ 	Irritant Reaction of different types Ring reaction

PHOTOS TAKEN FROM DRUG PATCH TESTING



From the ACAAI 2015 Drug Allergy and Anaphylaxis Committee